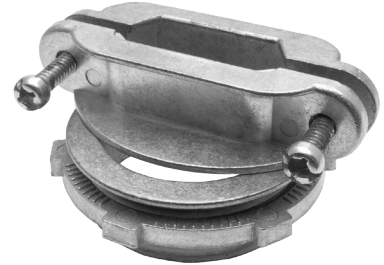


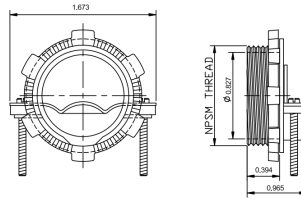
MODEL :		TYPE
PROJECT :		
PREPARED BY :	DATE :	

## SERIES SPECIFICATIONS

WI CABLE CLAMP 3/4"



## LINE DRAWING



## CONSTRUCTION

Material  
Die Cast Zinc

For Service Entrance  
No

Federal Spec  
A-A-50554

For Use With  
(2) 14-2 NM, AWG 0.340" to 0.515" Dia. Flex cord (dry location) 14/3, 14/2 SJO

## DIMENSION

Trade Size  
3/4"

Thread Length (In.)  
0.394

Internal Diameter (In.)  
0.827

Width (In.)  
1.673

APPLICATION AND PERFORMANCE SPECIFICATION INFORMATION IS SUBJECT TO CHANGE WITHOUT NOTIFICATION

MODEL :	TYPE
PROJECT :	
PREPARED BY :	DATE :

### DIMENSION (Cont.)

Screw Size  
10-24 UNC X 1in FHDP Tri Combo

### ORDERING INFORMATION

Part Number: WI L104

Package Qty: 25 PCS

IMS Code: 0278-6493

APPLICATION AND PERFORMANCE SPECIFICATION INFORMATION IS SUBJECT TO CHANGE WITHOUT NOTIFICATION