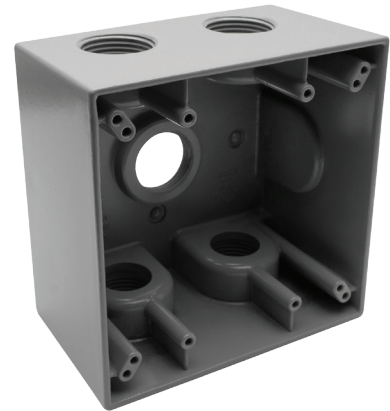


MODEL :		TYPE
PROJECT :		
PREPARED BY :	DATE :	

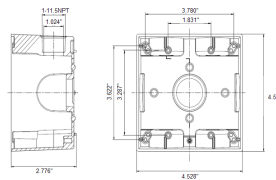
## SERIES SPECIFICATIONS

WI 2G 2-5/8" DEEP BOX 5X1" H



**RoHS**  
COMPLIANT

## LINE DRAWING



## CONSTRUCTION

**Material**  
Die Cast Copper-Free Aluminum

**Gang**  
2

**Ground Screw**  
Included

**Finish**  
Gray

**No. of Outlet Holes**  
5

**No. of Closure Plugs**  
2

## DIMENSION

**Depth (In.)**  
2 5/8

**Height (In.)**  
4 1/2

**Width (In.)**  
2 3/4

**Volume cu. In.**  
39.1

APPLICATION AND PERFORMANCE SPECIFICATION INFORMATION IS SUBJECT TO CHANGE WITHOUT NOTIFICATION

MODEL :	TYPE
PROJECT :	
PREPARED BY :	DATE :

## DIMENSION

Hole Size (In.)

1

## ORDERING INFORMATION

Part Number: WI DTB100/5

Package Qty: 10 PCS

IMS Code: 0278-8290

APPLICATION AND PERFORMANCE SPECIFICATION INFORMATION IS SUBJECT TO CHANGE WITHOUT NOTIFICATION