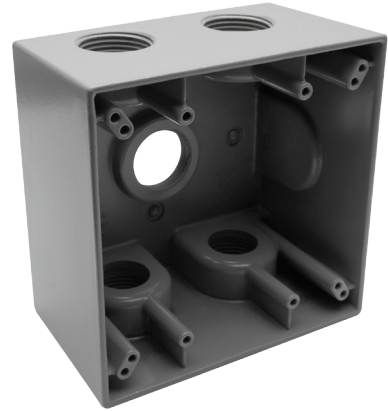


MODEL :		TYPE
PROJECT :		
PREPARED BY :	DATE :	

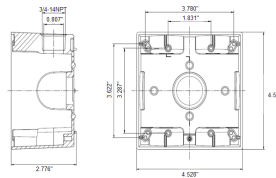
SERIES SPECIFICATIONS

WI 2G 2-5/8" DEEP BOX 5X3/4" H



RoHS
COMPLIANT

LINE DRAWING



CONSTRUCTION

Material
Die Cast Copper-Free Aluminum

Gang
2

Ground Screw
Included

Finish
Gray

No. of Outlet Holes
5

No. of Closure Plugs
2

DIMENSION

Depth (In.)
2 5/8

Height (In.)
4 1/2

Width (In.)
2 3/4

Volume cu. In.
39.1

APPLICATION AND PERFORMANCE SPECIFICATION INFORMATION IS SUBJECT TO CHANGE WITHOUT NOTIFICATION

MODEL :	TYPE
PROJECT :	
PREPARED BY :	DATE :

DIMENSION

Hole Size (In.)
4-Mar

ORDERING INFORMATION

Part Number: WI DTB75/5

Package Qty: 10 PCS

IMS Code: 0278-8302

APPLICATION AND PERFORMANCE SPECIFICATION INFORMATION IS SUBJECT TO CHANGE WITHOUT NOTIFICATION