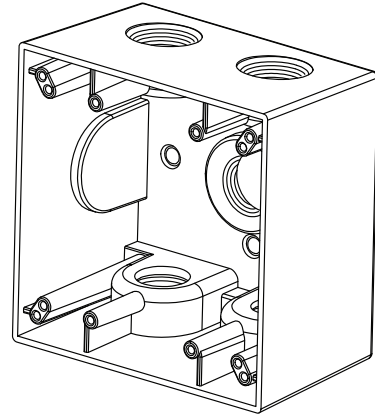


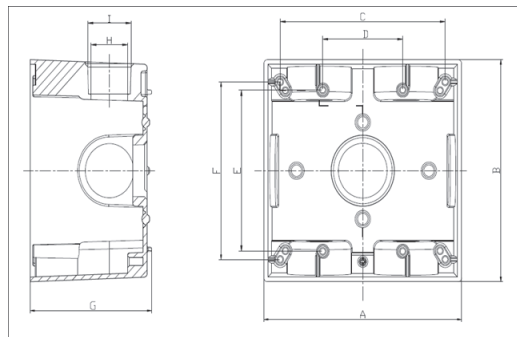
MODEL :		TYPE
PROJECT :		
PREPARED BY :	DATE :	

## SERIES SPECIFICATIONS

2 GANG WEATHERPROOF BOX 2-5/8" DEEP 7 X 3/4"  
HOLE (ALL SIDES) GRAY



## LINE DRAWING



## CONSTRUCTION

Material  
Aluminum

Gang  
2

Ground Screw  
6-32UNC X 0.37in or 10-24UNC X 0.24in or  
ø0.15\*0.35 in

Finish  
Gray

No. of Outlet Holes  
7

## DIMENSION

A (In.)  
4.528

A (mm)  
115mm

B (In.)  
4.582

B (mm)  
115mm

APPLICATION AND PERFORMANCE SPECIFICATION INFORMATION IS SUBJECT TO CHANGE WITHOUT NOTIFICATION

MODEL :		TYPE
PROJECT :		
PREPARED BY :	DATE :	

## DIMENSION (CONT.)

C (In.) 3.78	C (mm) 96
D (In.) 1.831	D (mm) 46.5
E (In.) 3.287	E (mm) 83.5
F (In.) 3.622	F (mm) 92
G (In.) 2.776	G (mm) 70.5mm
H (In.) 0.807	H (mm) 20.5
I 3/4-14NPT	Volume (Cu. In.) 40.3 CU. IN.

## LISTINGS/RATINGS

Listings  
UL Listed

Location Ratings  
Suitable for Wet locations

## ORDERING INFORMATION

Part Number: WI DTB75/7X

IMS Code: 0278-8305

Master Carton Qty: 10 PCS

Pallet Qty: 1080 PCS

Master Carton Dimensions: 14x4.8x9.5 In.

Pallet Dimensions: 44.09x44.09x44.09 In.

Product Weight: 18.2 oz.

APPLICATION AND PERFORMANCE SPECIFICATION INFORMATION IS SUBJECT TO CHANGE WITHOUT NOTIFICATION