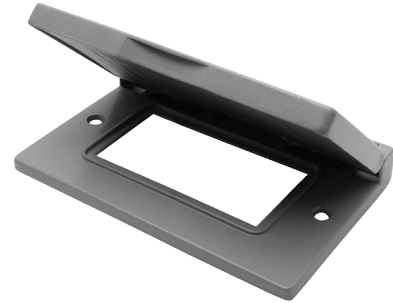


MODEL :		TYPE
PROJECT :		
PREPARED BY :	DATE :	

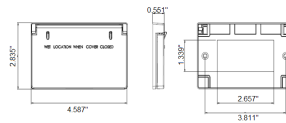
SERIES SPECIFICATIONS

WI 1G HORIZONTAL GFCI CVR



RoHS
COMPLIANT

LINE DRAWING



CONSTRUCTION

Material
Zinc Die Cast

Gang
1

Type
GFCI Horizontal

Finish
Powder Coat

Color
Gray

Gasket
Included

DIMENSION

Width (In.)
2 3/4

Height (In.)
4 1/2

APPLICATION AND PERFORMANCE SPECIFICATION INFORMATION IS SUBJECT TO CHANGE WITHOUT NOTIFICATION

MODEL :	TYPE
PROJECT :	
PREPARED BY :	DATE :

ORDERING INFORMATION

Part Number: WI FG1DCBZ

Package Qty: 15 PCS

IMS Code: 0278-8338

APPLICATION AND PERFORMANCE SPECIFICATION INFORMATION IS SUBJECT TO CHANGE WITHOUT NOTIFICATION