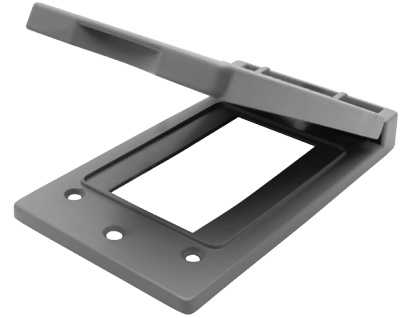


MODEL :		TYPE
PROJECT :		
PREPARED BY :	DATE :	

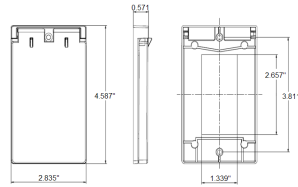
## SERIES SPECIFICATIONS

WI 1G VERTICLE GFCI CVR



**RoHS**  
COMPLIANT

## LINE DRAWING



## CONSTRUCTION

Material  
Zinc Die Cast

Gang  
1

Type  
GFCI Vertical

Finish  
Powder Coat

Color  
Bronze

Gasket  
Included

## DIMENSION

Width (In.)  
2 3/4

Height (In.)  
4 1/2

APPLICATION AND PERFORMANCE SPECIFICATION INFORMATION IS SUBJECT TO CHANGE WITHOUT NOTIFICATION

MODEL :	TYPE
PROJECT :	
PREPARED BY :	DATE :

ORDERING INFORMATION

Part Number: WI FGV1DCBZ

Package Qty: 25 PCS

IMS Code: 0278-8350

APPLICATION AND PERFORMANCE SPECIFICATION INFORMATION IS SUBJECT TO CHANGE WITHOUT NOTIFICATION