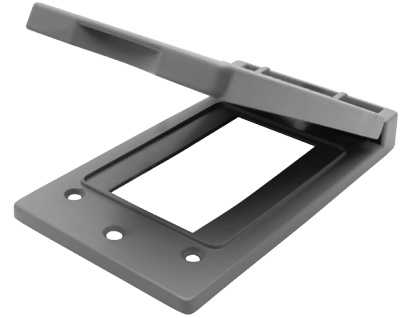


|               |        |      |
|---------------|--------|------|
| MODEL :       |        | TYPE |
| PROJECT :     |        |      |
| PREPARED BY : | DATE : |      |

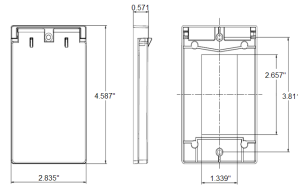
## SERIES SPECIFICATIONS

WI 1G VERTICLE GFCI CVR



**RoHS**  
COMPLIANT

## LINE DRAWING



## CONSTRUCTION

Material  
Zinc Die Cast

Gang  
1

Type  
GFCI Vertical

Finish  
Powder Coat

Color  
White

Gasket  
Included

## DIMENSION

Width (In.)  
2 3/4

Height (In.)  
4 1/2

APPLICATION AND PERFORMANCE SPECIFICATION INFORMATION IS SUBJECT TO CHANGE WITHOUT NOTIFICATION

|               |        |      |
|---------------|--------|------|
| MODEL :       |        | TYPE |
| PROJECT :     |        |      |
| PREPARED BY : | DATE : |      |

ORDERING INFORMATION

Part Number: WI FGV1DCW

Package Qty: 25 PCS

IMS Code: 0278-8353

APPLICATION AND PERFORMANCE SPECIFICATION INFORMATION IS SUBJECT TO CHANGE WITHOUT NOTIFICATION