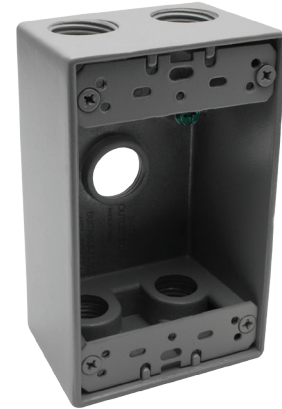


MODEL :		TYPE
PROJECT :		
PREPARED BY :	DATE :	

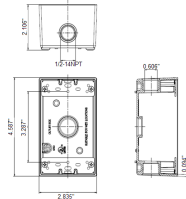
## SERIES SPECIFICATIONS

WI 1G 2" DEEP BOX 3X1/2" H WH



**RoHS**  
COMPLIANT

## LINE DRAWING



## CONSTRUCTION

Material  
Die Cast Copper-Free Aluminum

Gang  
1

Ground Screw  
Included

Finish  
White

No. of Outlet Holes  
3

No. of Closure Plugs  
2

## DIMENSION

Depth (In.)  
2

Height (In.)  
4 1/2

Width (In.)  
2 3/4

Volume cu. In.  
18.3

APPLICATION AND PERFORMANCE SPECIFICATION INFORMATION IS SUBJECT TO CHANGE WITHOUT NOTIFICATION

MODEL :	TYPE
PROJECT :	
PREPARED BY :	DATE :

## DIMENSION

Hole Size (In.)  
2-Jan

## ORDERING INFORMATION

Part Number: WI FSB50/3W

Package Qty: 20 PCS

IMS Code: 0278-8371

APPLICATION AND PERFORMANCE SPECIFICATION INFORMATION IS SUBJECT TO CHANGE WITHOUT NOTIFICATION