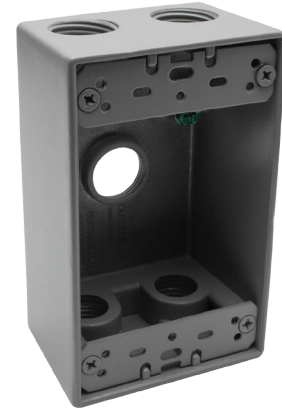


|               |  |        |      |
|---------------|--|--------|------|
| MODEL :       |  |        | TYPE |
| PROJECT :     |  |        |      |
| PREPARED BY : |  | DATE : |      |

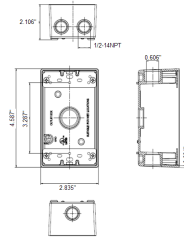
## SERIES SPECIFICATIONS

WI 1G 2" DEEP BOX 4X1/2" H



**RoHS**  
COMPLIANT

## LINE DRAWING



## CONSTRUCTION

Material  
Die Cast Copper-Free Aluminum

Gang  
1

Ground Screw  
Included

Finish  
Gray

No. of Outlet Holes  
4

No. of Closure Plugs  
2

## DIMENSION

Depth (In.)  
2

Height (In.)  
4 1/2

Width (In.)  
2 3/4

Volume cu. In.  
18.3

APPLICATION AND PERFORMANCE SPECIFICATION INFORMATION IS SUBJECT TO CHANGE WITHOUT NOTIFICATION

|               |        |
|---------------|--------|
| MODEL :       | TYPE   |
| PROJECT :     |        |
| PREPARED BY : | DATE : |

## DIMENSION

Hole Size (In.)  
2-Jan

## ORDERING INFORMATION

Part Number: WI FSB50/4

Package Qty: 20 PCS

IMS Code: 0278-8374

APPLICATION AND PERFORMANCE SPECIFICATION INFORMATION IS SUBJECT TO CHANGE WITHOUT NOTIFICATION