

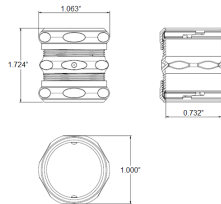
MODEL :		TYPE
PROJECT :		
PREPARED BY :	DATE :	

## SERIES SPECIFICATIONS

WI STL COMP CPLG 1/2"



## LINE DRAWING



## CONSTRUCTION

Material  
Steel

Concrete Tight  
When Taped

Type  
Compression Coupling

Finish  
Zinc Electro-Plated

Application  
Above 600V

## DIMENSION

Length (In.)  
1.724

Hexagonal Length (In.)  
1

Inner Diameter (In.)  
0.732

APPLICATION AND PERFORMANCE SPECIFICATION INFORMATION IS SUBJECT TO CHANGE WITHOUT NOTIFICATION

MODEL :		TYPE
PROJECT :		
PREPARED BY :	DATE :	

ORDERING INFORMATION

Part Number: WI MEC-760

Package Qty: 50 PCS

IMS Code: 0285-2874

APPLICATION AND PERFORMANCE SPECIFICATION INFORMATION IS SUBJECT TO CHANGE WITHOUT NOTIFICATION