

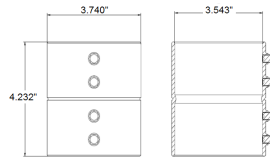
MODEL :		TYPE
PROJECT :		
PREPARED BY :	DATE :	

## SERIES SPECIFICATIONS

WI STL SET SCREW CPLG 3"



## LINE DRAWING



## CONSTRUCTION

Material  
Steel

Type  
Coupling

Finish  
Zinc Electro-Plated

Application  
Above 600V

## DIMENSION

Trade Size  
3

Length (In.)  
4.528

Diameter (In.)  
3.547

Hexagonal Length (In.)  
-

Dimple Diameter (In.)  
3.429

APPLICATION AND PERFORMANCE SPECIFICATION INFORMATION IS SUBJECT TO CHANGE WITHOUT NOTIFICATION

MODEL :		TYPE
PROJECT :		
PREPARED BY :	DATE :	

## DIMENSION (Cont.)

Screw Size  
1/4-28 UNF x 0.41FHCP or 1/4-20 UNC x  
0.41FHCP

## ORDERING INFORMATION

Part Number: WI MES-767

Package Qty: 4 PCS

IMS Code: 0285-3045

APPLICATION AND PERFORMANCE SPECIFICATION INFORMATION IS SUBJECT TO CHANGE WITHOUT NOTIFICATION