

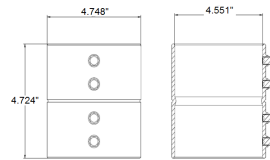
MODEL :		TYPE
PROJECT :		
PREPARED BY :	DATE :	

SERIES SPECIFICATIONS

WI STL SET SCREW CPLG 4"



LINE DRAWING



CONSTRUCTION

Material
Steel

Type
Coupling

Finish
Zinc Electro-Plated

Application
Above 600V

DIMENSION

Trade Size
4

Length (In.)
4.961

Diameter (In.)
4.547

Hexagonal Length (In.)
-

Dimple Diameter (In.)
4.429

APPLICATION AND PERFORMANCE SPECIFICATION INFORMATION IS SUBJECT TO CHANGE WITHOUT NOTIFICATION

MODEL :	TYPE	
PROJECT :		
PREPARED BY :	DATE :	

DIMENSION (Cont.)

Screw Size
1/4-28 UNF x 0.41FHCP or 1/4-20 UNC x
0.41FHCP

ORDERING INFORMATION

Part Number: WI MES-769

Package Qty: 4 PCS

IMS Code: 0285-3051

APPLICATION AND PERFORMANCE SPECIFICATION INFORMATION IS SUBJECT TO CHANGE WITHOUT NOTIFICATION