

CONTRACTOR:	
PROJECT:	DATE:
PREPARED BY:	SERIES: WI CB400

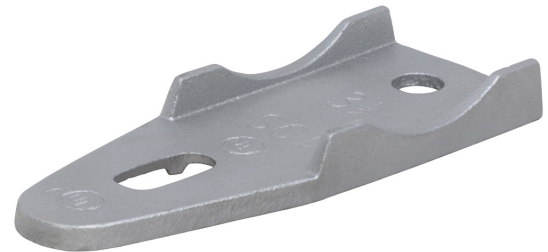
WI CB400

SPECIFICATION & FEATURES

DESCRIPTION

4" CLAMP BACK FOR EMT/RIGID CONDUIT

Country of Origin: CN



ORDERING INFORMATION

PART # WI CB400	STOCK CODE 0322-6551	LENGTH 8.88 Inches	WIDTH 3.06 Inches	HEIGHT 1.06 Inches
TRADE SIZE None	COLOR Gray	FINISH Zinc Plated	MATERIAL Malleable Iron	SCREW MATERIAL Steel

APPLICATION AND PERFORMANCE SPECIFICATION INFORMATION IS SUBJECT TO CHANGE WITHOUT NOTIFICATION

11675 SW TOM MACKIE BLVD. | PORT ST. LUCIE, FL 34987 | P: 772.878.4944 | WWW.CENTAURINSTALLATION.COM