

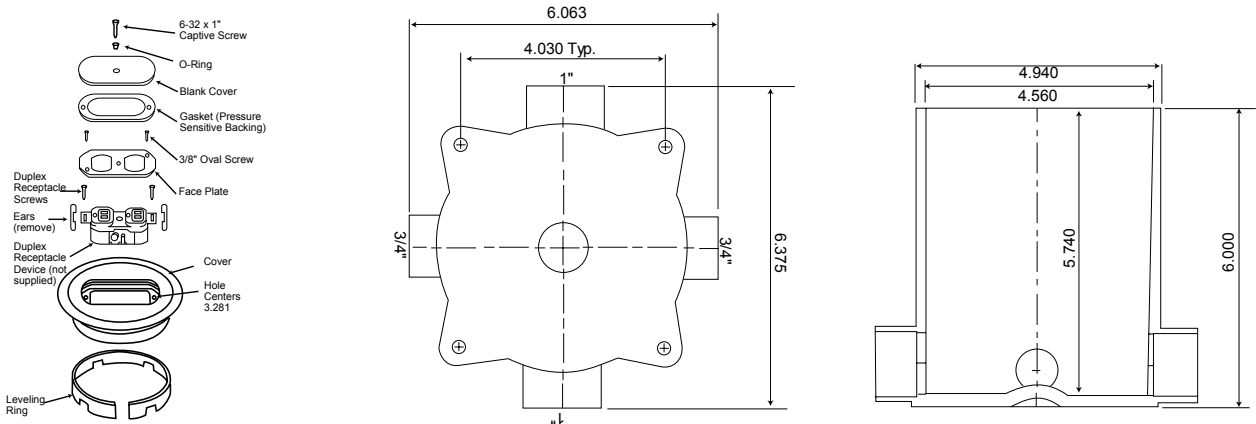
CONTRACTOR	
PROJECT	DATE
PREPARED BY	MODEL : FB

SERIES SPECIFICATIONS

Installed in poured-in-place concrete or wood floors, Centaur's FB Floor Box provides for flush-mounted power and/or communications data cabling in open-space areas. Floor box applications include shopping centers, theaters, department stores, airports, hospitals and office buildings.



LINE DRAWING



CONSTRUCTION

Housing Material
PVC

Depth
6"

Inner Diameter
4.56"

Conduit Hubs
4 @ 90°

Box Volume
90 cu.in. / 1475 ml

Conduit Hubs Accept
Rigid PVC Conduit or
Electrical Nonmetallic Tubing

Reducer Plugs
(2) 1" x 3/4", (3) 3/4" x 1/2"

Wall Thickness
3/16"

APPLICATION AND PERFORMANCE SPECIFICATION INFORMATION IS SUBJECT TO CHANGE WITHOUT NOTIFICATION

CONTRACTOR	
PROJECT	DATE
PREPARED BY	MODEL : FB

CERTIFICATIONS/WARRANTY

Listing
UL Listed

Location Rating:
Suitable for Dry locations

ORDERING INFORMATION

Part Number: FB

Case Dimensions (in.): 16.5x12x11.5

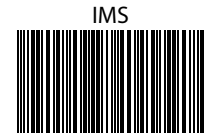
Case Quantity: 5 PCS

Item Weight (lbs.): 1.415

Case Weight (lbs.): 7.2

UPC BARCODES

	GTIN-12	GTIN-14	IMS Code
FB	190010300884	00190010300884	0255-9330



0255933000960113



1 90010 30088 4

APPLICATION AND PERFORMANCE SPECIFICATION INFORMATION IS SUBJECT TO CHANGE WITHOUT NOTIFICATION