



# CENTAUR

ELECTRICAL INSTALLATION

CONTRACTOR:

PROJECT:

DATE:

PREPARED BY:

SERIES:

## METAL FRAMING STRUT CHANNEL

### STRUT FEATURES

Centaur's strut channels are offered in standard 10' and 20' lengths, Centaur offers custom strut channel lengths upon request.

### GAUGE AND DEPTH

#### 12 GAUGE

0.102

#### DEPTH

1-5/8" x 13/16" D

#### 12 GAUGE

0.102

#### DEPTH

1-5/8" x 1-5/8" D

#### 14 GAUGE

0.077

#### DEPTH

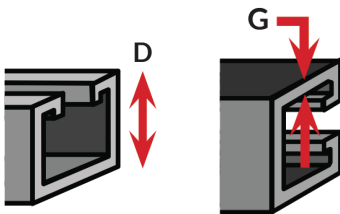
1-5/8" x 13/16" D

#### 14 GAUGE

0.077

#### DEPTH

1-5/8" x 1-5/8" D



### LENGTH

#### STANDARD 10'

(Shorter runs for easy handling)

#### STANDARD 20'

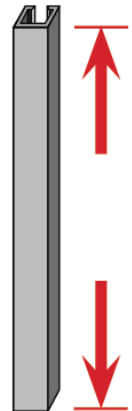
(Typical for longer runs)

#### 6'8"

(Typical for commercial joists distance)

#### CUSTOM CUT-TO-LENGTH

(6" increments)



### PERFORATION

#### OVAL SLOT

(Half Slot)

[ 9/16" x 1-1/8" x 2" on ctr. ]



#### SOLID

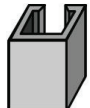
(No Perforation)



### MATERIAL & FINISH

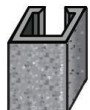
#### STEEL

(Carbon steel, structural grade, 33,000 min yield)



#### PRE-GALVANIZED

(Continuous galvanized) - G90 zinc coating weight for cost effective long-term galvanic and barrier corrosion protection.



APPLICATION AND PERFORMANCE SPECIFICATION INFORMATION IS SUBJECT TO CHANGE WITHOUT NOTIFICATION

11675 SW TOM MACKIE BLVD. | PORT ST. LUCIE, FL 34987 | P: 772.878.4944 | WWW.CENTAURINSTALLATION.COM



CONTRACTOR:

PROJECT:

DATE:

PREPARED BY:

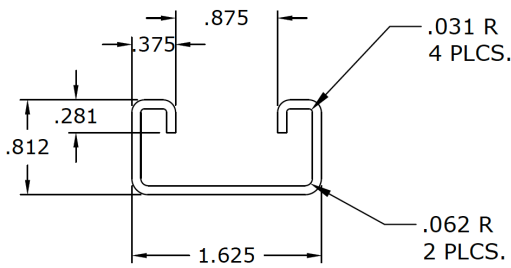
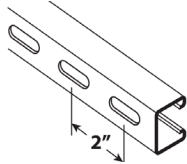
SERIES:

## METAL FRAMING STRUT CHANNEL

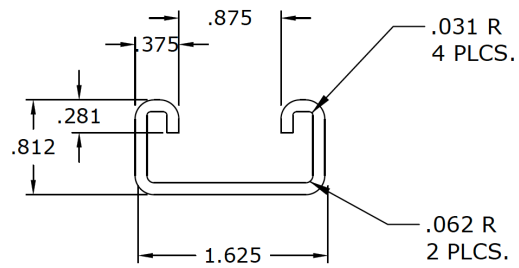
### LINE DRAWING

#### [ OVAL-SLOT ]

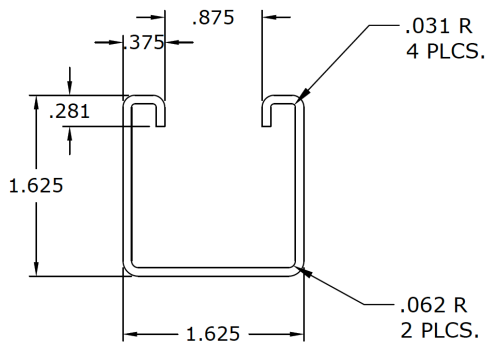
9/16" x 1-1/8" - 2" ON CTR



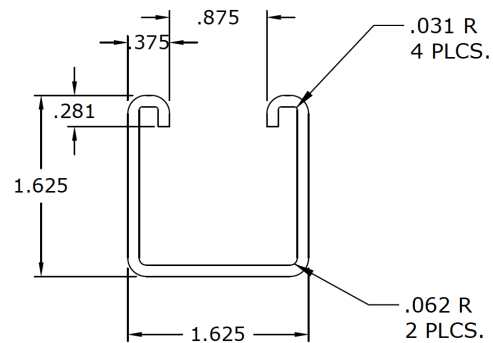
SCG21S120PG  
14 ga. (.077")



SCG11S120PG  
12 ga. (.102")



SCG22S120PG  
14 ga. (.077")



SCG12S120PG  
12 ga. (.102")

APPLICATION AND PERFORMANCE SPECIFICATION INFORMATION IS SUBJECT TO CHANGE WITHOUT NOTIFICATION