

CONTRACTOR:	
PROJECT:	DATE:
PREPARED BY:	SERIES: PSB232-B

PSB232-B

SPECIFICATION & FEATURES

DESCRIPTION

2 GANG 32 CU IN PLASTIC SB - B BRACKET

CATEGORY:

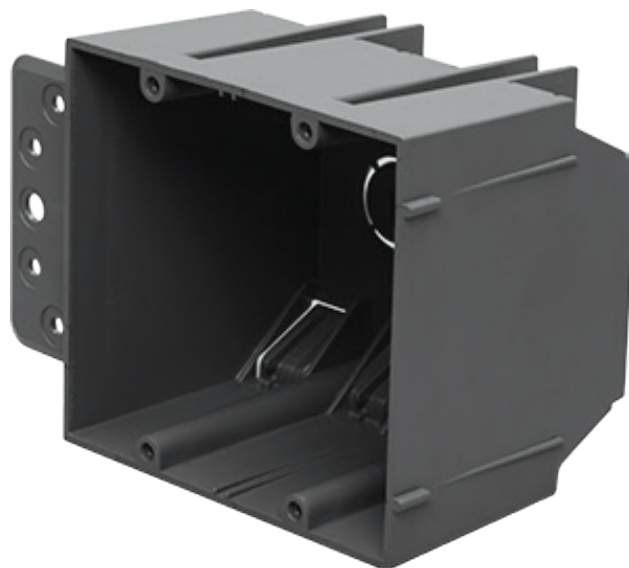
NEW WORK

FEATURES:

Knockouts for easy cable entry
 ETL listed & 2-hour fire rated

RATINGS

Country of Origin: CN



ORDERING INFORMATION

PART #
 PSB232-B

STOCK CODE
 0599-0796

CARTON QTY
 50

MOUNT
 DIRECT

INSULATION
 NON-INSULATED

COLOR
 GRAY

WEIGHT
 0.4 POUNDS

NUMBER OF OUTLET
 2

MATERIAL
 PVC

HEIGHT
 3.75"

WIDTH
 5.25"

DEPTH
 3"

LENGTH
 3.75 INCHES

CABLE ENTRY
 (8) CLAMPS, (1) 1/2" KO

CUBIC CAPACITY
 32 IN³

APPLICATION AND PERFORMANCE SPECIFICATION INFORMATION IS SUBJECT TO CHANGE WITHOUT NOTIFICATION

11675 SW TOM MACKIE BLVD. | PORT ST. LUCIE, FL 34987 | P: 772.878.4944 | WWW.CENTAURINSTALLATION.COM