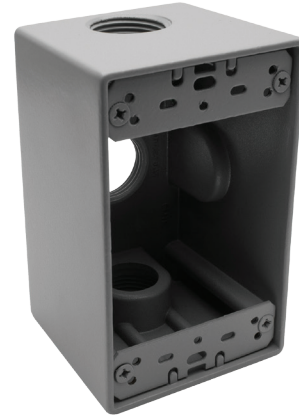


MODEL :			TYPE
PROJECT :			
PREPARED BY :		DATE :	

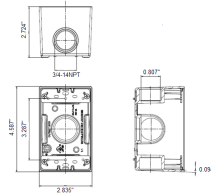
SERIES SPECIFICATIONS

WI 1G 2-5/8" DEEP BOX 3X3/4"



RoHS
COMPLIANT

LINE DRAWING



CONSTRUCTION

Material
Die Cast Copper-Free Aluminum

Gang
1

Ground Screw
Included

Finish
Gray

No. of Outlet Holes
3

No. of Closure Plugs
2

DIMENSION

Depth (In.)
2 5/8

Height (In.)
4 1/2

Width (In.)
2 3/4

Volume cu. In.
23.9

APPLICATION AND PERFORMANCE SPECIFICATION INFORMATION IS SUBJECT TO CHANGE WITHOUT NOTIFICATION

MODEL :		TYPE
PROJECT :		
PREPARED BY :	DATE :	

DIMENSION

Hole Size (In.)
4-Mar

ORDERING INFORMATION

Part Number: WI DB75/3

Package Qty: 15 PCS

IMS Code: 0278-8263

APPLICATION AND PERFORMANCE SPECIFICATION INFORMATION IS SUBJECT TO CHANGE WITHOUT NOTIFICATION