

MODEL :		TYPE
PROJECT :		
PREPARED BY :	DATE :	

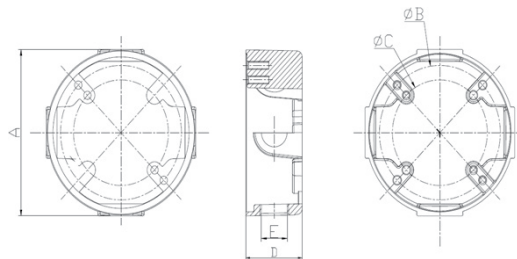
SERIES SPECIFICATIONS

WI EXR SERIES

4" ROUND WEATHERPROOF EXTENSION BOX 4 X 1/2" HOLE-GRAY



LINE DRAWING



CONSTRUCTION

Material  
Aluminum

Color  
Gray

Trade Size  
4 1/2"

Screw Size  
10-24UNC X 0.59in

Outlet Holes  
4" diameter

DIMENSIONS

A (In.)  
4.331

A (mm)  
110.0074

B (In.)  
3.5

B (mm)  
88.9

APPLICATION AND PERFORMANCE SPECIFICATION INFORMATION IS SUBJECT TO CHANGE WITHOUT NOTIFICATION

MODEL :		TYPE
PROJECT :		
PREPARED BY :	DATE :	

## DIMENSIONS (Cont.)

C (In.) 2.748	C (mm) 69.7992
D (In.) 1.634	D (mm) 41.5036
E (In.) 2.748	E (mm) 69.7992
F (In.) 1.634	F (mm) 41.5036
NPT 1/2-14 NPT	Volume 15.8CU. IN.
Hole Size 1/2"	

## ORDERING INFORMATION

Part Number: WI EXR50/4

IMS Code: 0278-8320

Master Carton Qty: 20 PCS

Pallet Qty: 1600 PCS

Master Carton Dimensions : 17.5x4.7x9.1 In.

Pallet Dimensions : 44.09x44.09x42.12 In.

APPLICATION AND PERFORMANCE SPECIFICATION INFORMATION IS SUBJECT TO CHANGE WITHOUT NOTIFICATION