

MODEL :		TYPE
PROJECT :		
PREPARED BY :	DATE :	

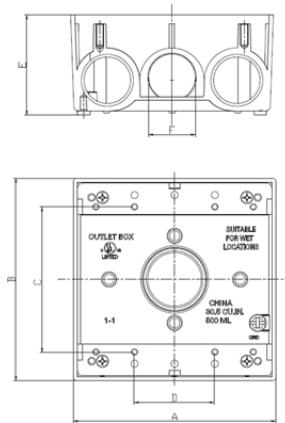
SERIES SPECIFICATIONS

WI TGB SERIES

2 GANG WEATHERPROOF BOX 2-3/16" DEEP 4 X 1"
HOLE- GRAY



LINE DRAWING



CONSTRUCTION

Material Aluminum	Gang 2
Ground Screw Included	Finish Gray
No. of Outlet Holes 4	Screw Size 6-32UNC X 0.37in or 10-24UNC X 0.24in

DIMENSION

A (In.) 4.567	A (mm) 116.0018
B (In.) 4.567	B (mm) 116.0018

APPLICATION AND PERFORMANCE SPECIFICATION INFORMATION IS SUBJECT TO CHANGE WITHOUT NOTIFICATION

MODEL :		TYPE
PROJECT :		
PREPARED BY :	DATE :	

DIMENSION (CONT.)

C (In.) 3.287	C (mm) 83.4898
D (In.) 1.811	D (mm) 45.9994
E (In.) 2.264	E (mm) 57.5056
NPT Gauge 1-11.5NPT	Volume (Cu. In.) 30.5 CU. IN.

LISTINGS/RATINGS

Listings
UL Listed

Location Ratings
Suitable for Wet Locations

ORDERING INFORMATION

Part Number: WI TGB100/4

IMS Code: 0278-8431

Master Carton Qty: 15 PCS

Pallet Qty: 1215 PCS

Master Carton Dimensions : 14x4.8x11.4 In.

Pallet Dimensions : 44.09x44.09x39.37 In.

APPLICATION AND PERFORMANCE SPECIFICATION INFORMATION IS SUBJECT TO CHANGE WITHOUT NOTIFICATION