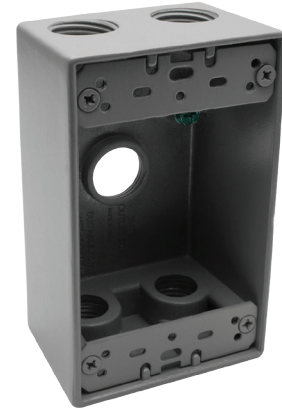


MODEL :		TYPE
PROJECT :		
PREPARED BY :	DATE :	

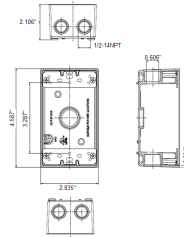
SERIES SPECIFICATIONS

WI 1G 2" DEEP BOX 5 X 1/2" H BRZ



RoHS
COMPLIANT

LINE DRAWING



CONSTRUCTION

Material
Die Cast Copper-Free Aluminum

Gang
1

Ground Screw
Included

Finish
Bronze

No. of Outlet Holes
5

No. of Closure Plugs
2

DIMENSION

Depth (In.)
2

Height (In.)
4 1/2

Width (In.)
2 3/4

Volume cu. In.
18.3

APPLICATION AND PERFORMANCE SPECIFICATION INFORMATION IS SUBJECT TO CHANGE WITHOUT NOTIFICATION

MODEL :		TYPE
PROJECT :		
PREPARED BY :	DATE :	

DIMENSION

Hole Size (In.)
2-Jan

ORDERING INFORMATION

Part Number: WI FSB50/5BZ

Package Qty: 20 PCS

IMS Code: 0280-0500

APPLICATION AND PERFORMANCE SPECIFICATION INFORMATION IS SUBJECT TO CHANGE WITHOUT NOTIFICATION