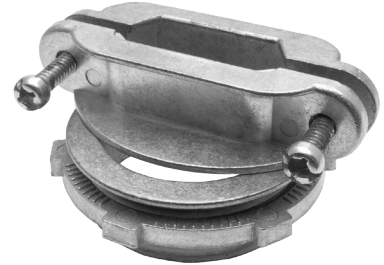


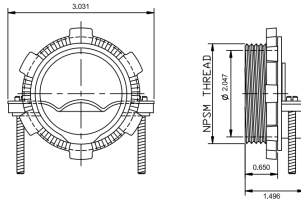
MODEL :		TYPE
PROJECT :		
PREPARED BY :	DATE :	

## SERIES SPECIFICATIONS

CABLE CLAMP 2"



## LINE DRAWING



## CONSTRUCTION

Material  
Die Cast Zinc

For Service Entrance  
Yes

Federal Spec  
A-A-50553

For Use With  
3-2/0 or 3-4/0 NM

## DIMENSION

Trade Size  
2"

Thread Length (In.)  
0.65

Internal Diameter (In.)  
2.047

Width (In.)  
3.031

APPLICATION AND PERFORMANCE SPECIFICATION INFORMATION IS SUBJECT TO CHANGE WITHOUT NOTIFICATION

MODEL :	TYPE
PROJECT :	
PREPARED BY :	DATE :

### DIMENSION (Cont.)

Screw Size  
1/4"-20 UNC X 1.5in FHDP Tri  
Combo

### ORDERING INFORMATION

Part Number: WI L108

Package Qty: 5 PCS

IMS Code: 0291-5748

APPLICATION AND PERFORMANCE SPECIFICATION INFORMATION IS SUBJECT TO CHANGE WITHOUT NOTIFICATION